



Court Wood Lane, Croydon

£475,000 Freehold

4 bedroom terraced house for sale

Description

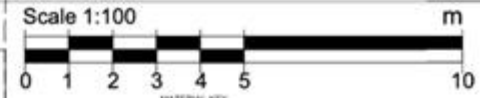
Excellent bright and airy 4 bedroom bedroom house. Perfect for larger families with elder children or house sharers. Excellent standard and finishing. Bright & Natural decor. Two receptions, Benefits from free on street parking & a private garden. Modern Fully Equipped Kitchen. Three Double bedrooms. Contemporary white suite bathroom. Excellent location close to local amenities and transport links including selsdon wood (perfect for long walks)

The property is located approximately 15 minutes walk from the centre of Croydon which has a mix of high street retailers, cafes and restaurants. Croydon a popular commuter town from its popular commuter station Central London is less than 25 minutes by train. There is easy access by car to the M25, M23, Gatwick Airport and the major motorway network making this a superb location for commuters. The development is 5 minutes away from Selsdon. Close to local amenities and has fantastic transport links all over London.

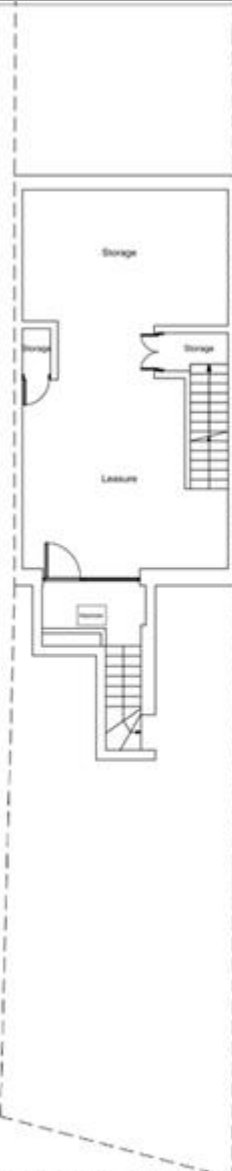


Tenure: Freehold

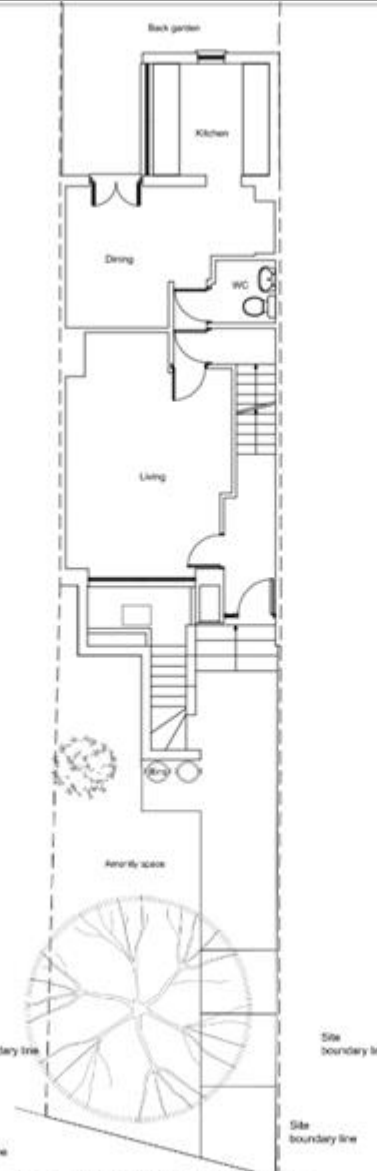
Tenure



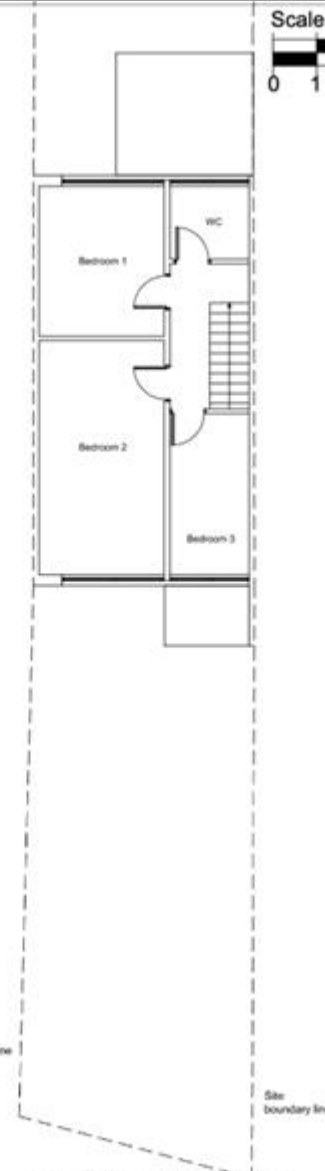
- MATERIAL KEY
- ① Red brick
 - ② Red clay tiles
 - ③ Concrete/brick
 - ④ Double glazed UPVC windows
 - ⑤ White painted panelling



EXISTING BASEMENT PLAN



EXISTING GROUND FLOOR PLAN



EXISTING FIRST FLOOR PLAN



EXISTING FRONT ELEVATION



EXISTING REAR ELEVATION

EXISTING PLANS - ELEVATIONS



Viewing by appointment only
Premier Assets - Head Office
GROSVENOR HOUSE, 160 GILLETT ROAD, THORNTON HEATH, SURREY CR7 8SN
Tel: 020 8689 0208 Email: info@premierassets.co.uk Website:

