



WILLOW COURT
PLATS 14-22

Flat , Willow Court, Bensham Manor Road, Thornton Heath

Offers Over £225,000 Leasehold

1 bedroom flat for sale

Description

In the Heart of Thornton Heath moments from the station lies this Beautifully Spacious 1 double bedroom ground floor flat with allocated parking & communal gardens. The accommodation comprises an excellent sized lounge - ideal for entertaining, fitted kitchen, double bedroom & bathroom/WC. In great condition throughout the flat benefits from excellent light levels and ample storage. Enviably located a stones throw from Thornton Heath's shops, restaurants and its excellent transport links are right on your doorstep. Contact the sales team immediately to arrange a viewing

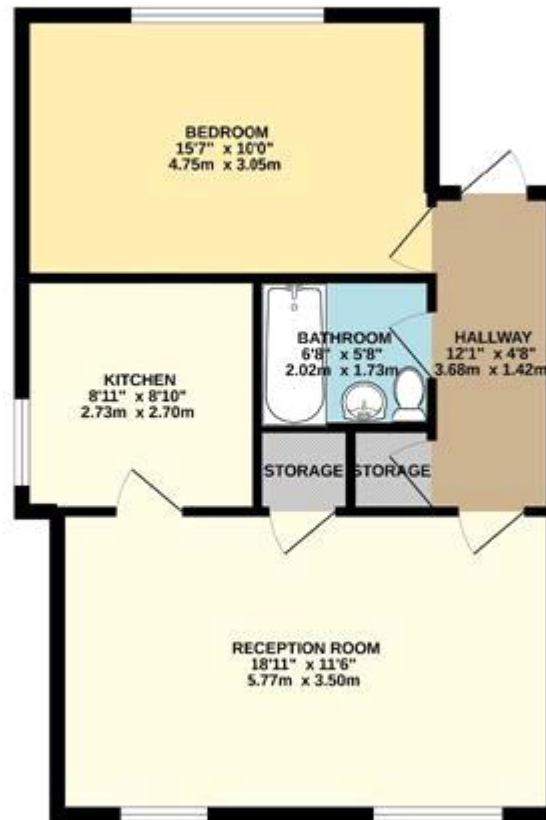
Tenure: Leasehold (125 years)

Tenure

Leasehold



GROUND FLOOR
568 sq.ft. (52.7 sq.m.) approx.



TOTAL FLOOR AREA: 568 sq.ft. (52.7 sq.m.) approx.

While every attempt has been made to ensure the accuracy of the floorplan contained herein, measurements of doors, windows, rooms and any other items are approximate and no responsibility is taken for any error, omission or misstatement. This plan is for illustrative purposes only and should be used as such by any prospective purchaser. The services, systems and appliances shown have not been tested and no guarantee as to their operability or efficiency can be given.
Made with Blueprints 2022



Viewing by appointment only
Premier Assets - Head Office
GROSVENOR HOUSE, 160 GILLETT ROAD, THORNTON HEATH, SURREY CR7 8SN
Tel: 020 8689 0208 Email: info@premierassets.co.uk Website:

